



# Assessing Attributes of Patient-Provider's Relationships in Two Global Health Communities

By,

Rhonda F. Waddell, PHD, LCSW

and Gina Murray, MHC, LMHC

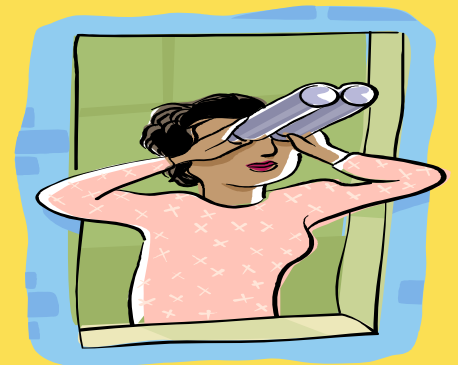
University of Florida

# Learning Objectives

- Discuss a qualitative case study approach for exploration of health issues related to two global health communities.
- Analyze the multifactors that affect patient-provider health relationships in two global health student projects.
- List six pertinent shared health issues that affect the health outcomes of two global health communities.

# A Qualitative Case Study

- Purpose: To evaluate the effects of global health projects on student learning experiences, and relationship exchanges between two host communities in the Yucatan and Dominican Republic (DR).



# Who conducted the research?

- Two experienced qualitative social science researchers.
- Two Spanish speaking student translators; one pre-medicine undergraduate level student and a graduate level social work student.



# What was studied?



- The attributes that characterized patient-provider interactions.
- The exploration of patient satisfaction factors.
- The identified host communities' health and social resources.

# Who were the subjects?

- Local residents who attended the global health sites.
- Participating local and US health providers, student trainees, and faculty.
- Community key informants from the hosting communities of the Yucatan and DR.



# What was asked?



- Participant attitudes on clinic operations, the services provided, and patient-provider relations.
- Items assessing patient satisfaction, and provider satisfaction with the global health experience.

# Qualitative Analysis Techniques

- Researchers used constant-comparative method & triangulation of multiple sources.
- Researchers categorize sub-codes and major codes using computer software (Word & Excel).
- Researchers examined & compared common patterns to saturation until six major themes emerged.

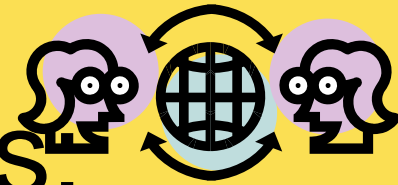


# Recognized Community Strengths

- Family First
- Hard Work Valued
- Avoid Trouble



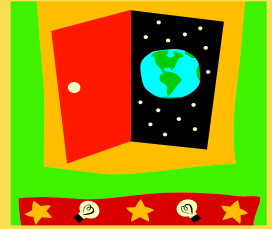
# Pertinent Shared Issues.



- Interdisciplinary Issues
- Cultural Sensitivity Issues
- Language Issues
- Pharmacy issues
- Clinic Location Issues
- Time Issues



# Overall Study Results



The identification of increased:

- Global health care demands, and an appreciation for this work by patients and health providers.
- The need for health care training & curriculum development.
- The need to foster interdisciplinary long-term sustainable health projects.



“ Thanks to the College of Medicine Educational Center (COMEC) for funding this case study. Also, thanks to all the faculty, students, and the Yucatan and DR communities for allowing the researchers to share these wonderful learning experiences and to dialogue with them.”